

The Record e-edition

There for you
24-hours-a-day
7-days-a-week.
Wherever you are.

Access the full edition of the *Sherbrooke Record* as well as special editions and 30 days of archives.

Renew or order a new 12-month print subscription and get a 12-month online subscription for an additional \$5 or purchase the online edition only for \$82.21.

Record subscription rates (includes Quebec taxes)

- 1 year print: \$155.91
- 6 month print: \$81.85
- 3 month print: \$41.57
- 12 month web only: \$82.21
- 1 month web only: \$7.46

Web subscribers have access to the daily *Record* as well as archives and special editions.

Subscribing is as easy as 1,2,3:

1. Visit the *Record* website: www.sherbrooke.com
2. Click e-edition.
3. Complete the form and wait for an email activating your on-line subscription.

Weather



TODAY:
SUNNY

HIGH OF 7
LOW OF 2



WEDNESDAY:
60% CHANCE
OF SHOWERS

HIGH OF 7
LOW OF 0



THURSDAY:
CLOUDY

HIGH OF 6
LOW OF -2



FRIDAY:
MIX OF SUN
AND CLOUDS

HIGH OF 5
LOW OF -3



SATURDAY:
MIX OF SUN
AND CLOUDS

HIGH OF 4
LOW OF -6

Owl's Bread Bakery celebrates 24 years in Potton



THE SCOOP MABLE HASTINGS

The Owl's Bread Bakery in Mansonville takes its name from the Owl's Head Mountain situated near the town. The Bakery is celebrating 24 years in operation in Potton having originally opened its doors for Valentine's Day in 1994. Owners, Chef Denis Mareuge and his wife Agnès Castilloux have attained a quality clientele of followers who dine at the location often changing with each season. Chef Mareuge received his diploma from L'école hôtelière de Lausanne, Switzerland renowned as the best hospitality school in the world, and he along with his wife, Agnès are proud of their many years in the picturesque village of Mansonville.

According to New York Times, Travel Columnist, Marian Burros, the Owl's Bread Bakery "brings one of the best bistro lunches this side of the Atlantic to its customers."

While the name and its reputation would lead one to deduce that bread is the signature creation at Owl's Bread Bakery, there are a plethora of mouth-watering delights available for your taste buds to sample. Croissants, foie gras created from goose liver, duck, cheeses, pastries and more exquisitely served cuisine will leave you eagerly anticipating your

next visit.

After ten wonderful years in Potton, in 2004 the couple opened a second establishment in Magog. This venture was a little less successful due to the astronomical costs of building in the city and the many strict regulations.

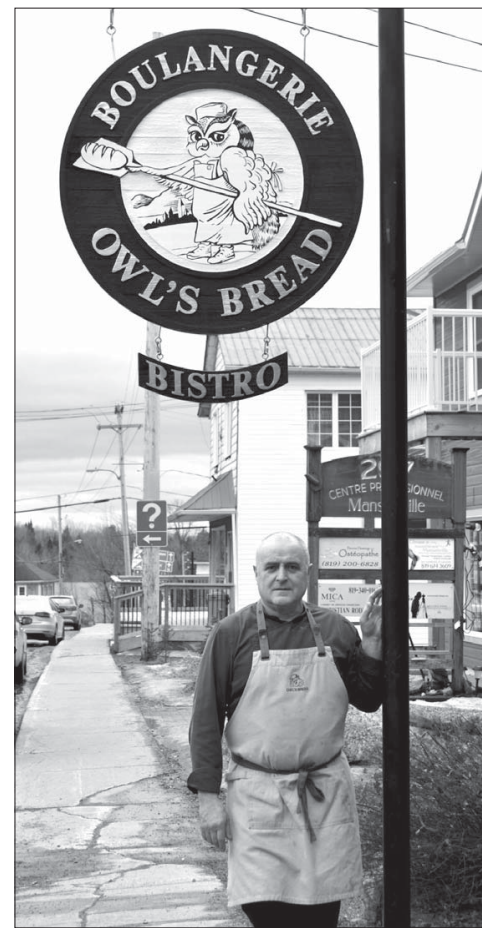
"We ended up selling the building," explained Mareuge. "We have a shop in the 'Carrefour de Santé Globale,' on route 112," he added. "This shop has been doing well."

Owning and operating a business at times means celebrating through the ups and struggling through the downs. Owl's Bread is no exception to this reality but the couple are proud to continue in Mansonville in hopes that with the pending development of Owl's Head Mountain there will be an increase in business and this will enable them to continue to thrive and grow in a community they appreciate and enjoy.

If the crowd gathered this Saturday as a photo was snapped for this article, is any indication, with a line up to the its door, the bakery is a definite stop for all. Some in line were on their way to or from the Owls Head Ski Hill while others were locals stopping for breads and desserts for their weekend dinner plans.

One woman approaching the counter exclaimed, "We are here to treat ourselves to one of those delicious chocolate eclairs after our dinner tonight," only to be urged by another customer offering a random suggestion. "Try the Duchesses cookies, they are to die for!" As the exchange continued and the couple stood contemplating, Agnès stood patiently at the counter waiting for a decision to be made.

If you have not yet visited Owl's Bread it is located at 299a Principale in Mansonville, 450-292-3088. While it is closed on Mondays and Tuesdays, the Mansonville location is open Wednesdays



Chef Denis Mareuge outside their Owl's Bread Bakery location in Mansonville.

and Thursdays from 9am to 5:30pm (open for lunch), Fridays 9am to 7pm open for lunch and supper, Saturdays 8:30am to 5:20pm open for lunch and supper and Sundays 8:30am to 5:00pm, open for lunch but not for supper.

As the hours change depending on the season, it is wise to call or check the website, www.owlsbread.com before visiting the Bistro.



WETLANDS ARE DISAPPEARING Protect them. Become a member today.

www.ducks.ca
1-866-384-DUCK



Ben by Daniel Shelton

